

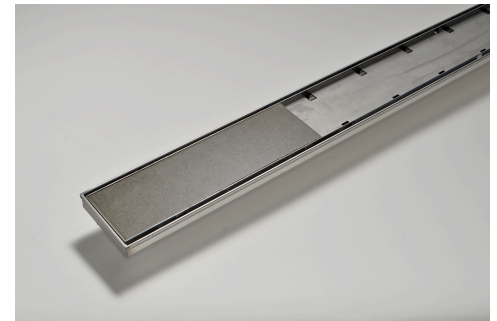
100TiiCO20 Drainage System

Product Description

The 100TiiCO20 is a standard Tile Insert drain designed to blend seamlessly with tiled floors. It is suitable for tiles up to 10mm thick.

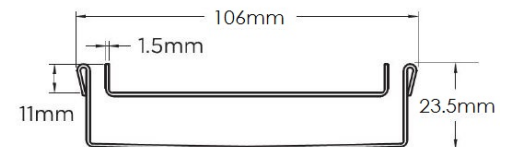
The 100TiiCO20 is a fixed length drainage unit with a centre outlet.

The complete drainage unit is full 316 marine grade stainless steel.



Applications

- Balcony
- Bathroom
- Courtyard
- Paved Area
- Pool Area
- Shower
- Special needs
- Threshold drainage
- Wet Area Drainage



Specifications

	Width	Depth	Length	Outlet size
Completed Unit	106mm	23mm	As required	DN80

